



57 Antione Rd, Vernon

1-bed, 1- bed , 540 Sq. Ft.

**Starting at
\$233,900.00**

**QUALITY HOMES BUILT
FOR
YEAR-ROUND LIVING**



For more information contact:
Don Levasseur, Sales Manager,
Tel: 250-372-0610
Email: don@jubileerv.com
Jubileerv.com/parkmodels





Jubilee RV, Radec Group and Okanagan Lake View Lots have partnered to offer affordable housing in the picturesque RV Resort Community in Vernon, BC. Steps away from Okanagan Lake, Okanagan Lake View lots provides 360-degree mountain views and access to Okanagan Lake.

Radec homes are solidly constructed for year-round living, with a variety of floor plans to choose from. Radec homes include gas range, refrigerator, dishwasher, microwave and washer & dryer.

Features

- 4,050 Sq. ft. lot size
- Luxury black chain link fence with privacy screen
- Ample parking
- 1- or 2-bedroom floor plans
- 9 & 10 ft. ceilings
- Hot Water on Demand system
- Heat Pump system for heating and cooling
- Double pane low-e vinyl windows.
- Faux Wood window coverings

Z-2 Limited Edition
1-Bed, 1-Bath
540 Sq.ft.
\$233,900



*Z-2 Limited Edition does not include washer & dryer

ANTIONE ROAD

O K A N A G A N L A K E



Walking distance to lake



10 min drive to Vernon



OKANAGAN LAKE VIEW LOTS

EST. 2022

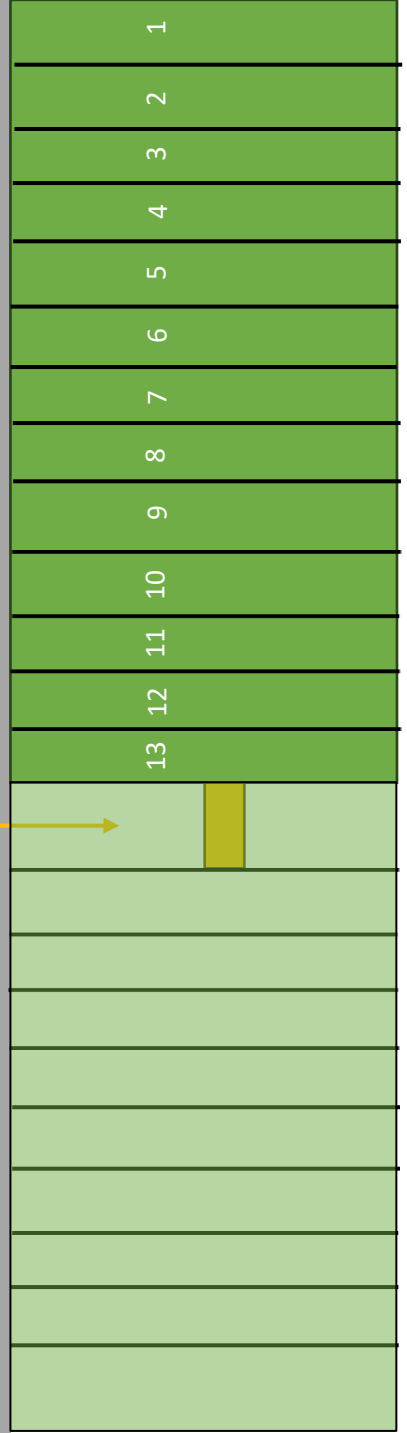
A SMALL FOOTPRINT COMMUNITY

57 Antione Rd, Vernon, BC.



4 min drive to Golf Course

COMMUNITY GARDEN



Phase 2

Phase 1



FLOOR

1 ¼" T&G SHEATHING
9 ¼" JOISTS W/ R25 BLOWN-IN INSULATION
OSB UNDERSHEATHING

EXTERIOR WALLS

PREMIUM VINYL SIDING W/ HARDIE SIDING
HOUSEWRAP
EXTERIOR SHEATHING
2X4 WALL STUDS W/ R14 BATT INSULATION
6 mil POLY VAPOUR BARRIER
½" PAINTED GYPSUM BOARD

ROOF

LOW-SLOPE ROOFING
ENGINEERED ROOF TRUSSES
R40 BATT INSULATION
6 mil POLY VAPOUR BARRIER
½" PAINTED GYPSUM BOARD
1x6 FASCIA BOARD

WINDOWS & DOORS

DOUBLE PANE, LOW-E VINYL WINDOWS
INSULATED EXTERIOR DOOR

ELECTRICAL

100 AMP PANEL WITH 50 AMP SERVICE
WIRED FOR CABLE AND INTERNET
LED LIGHTING PACKAGE

UTILITIES

HEATING AND COOLING SYSTEMS INCLUDED
HOT WATER ON DEMAND
EXTERIOR FROST FREE TAP

STANDARD FEATURES

LUXURY VINYL CLICK FLOORING THROUGHOUT
REAL RESIDENTIAL CABINETS AND DOOR FRONTS
SOFT CLOSE HARDWARE THROUGHOUT
2.5" INTERIOR CASING
3" BASEBOARD
FULL HEIGHT HOLLOW CORE INTERIOR DOORS
CHROME DOOR HARDWARE
STACKED WASHER & DRYER
FAUX WOOD BLINDS

KITCHEN

SOLID SURFACE COUNTERTOPS
4" SOLID SURFACE BACKSPLASH
UNDERMOUNT SINK
SINGLE LEVER CHROME PULL OUT FAUCET
STAINLESS STEEL APPLIANCES
COUNTER DEPTH FRENCH DOOR FRIDGE
30" GAS RANGE
OTR MICROWAVE
24" DISHWASHER

BATH

CHROME FIXTURES
UNDERMOUNT SINK
SOLID SURFACE COUNTERTOP
4" SOLID SURFACE BACKSPLASH
FIBREGLASS TUB OR SHOWER
TILED SHOWER SURROUNDS
COMFORT HEIGHT TOILET
WALL MOUNT MEDICINE CABINET

BEDROOM

CHEST OF DRAWERS IN BEDROOM
WARDROBE / CLOSET AS PER PLAN
NIGHTSTAND W/ STORAGE ABOVE

OKANAGAN LAKE VIEW LOTS
EST. 2022



A SMALL FOOTPRINT COMMUNITY

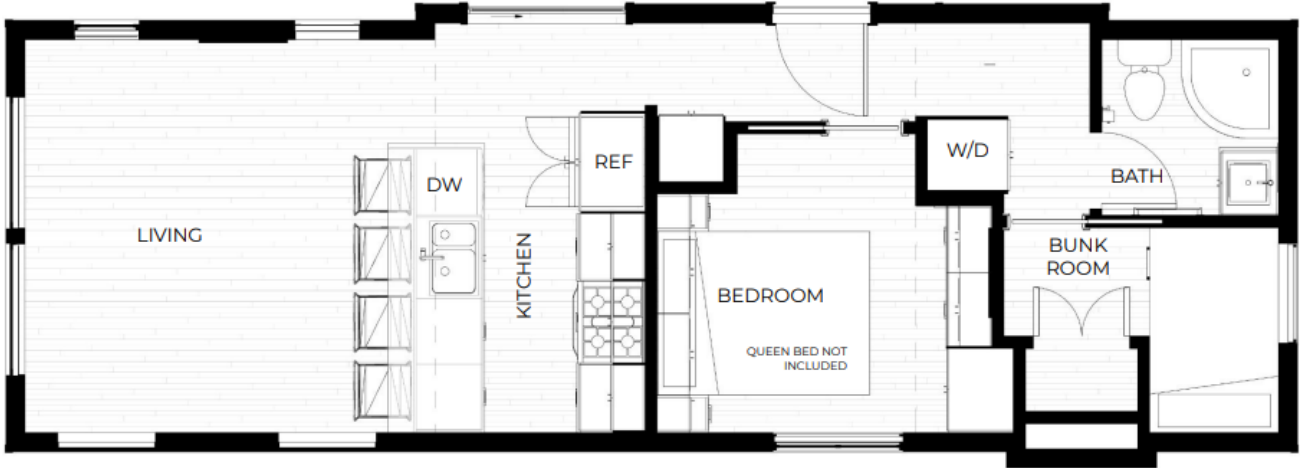
BUILT TO z241 CODE DUE TO CONTINUOUS IMPROVEMENTS, PRODUCT SPECIFICATIONS ARE SUBJECT TO CHANGE WITHOUT NOTICE



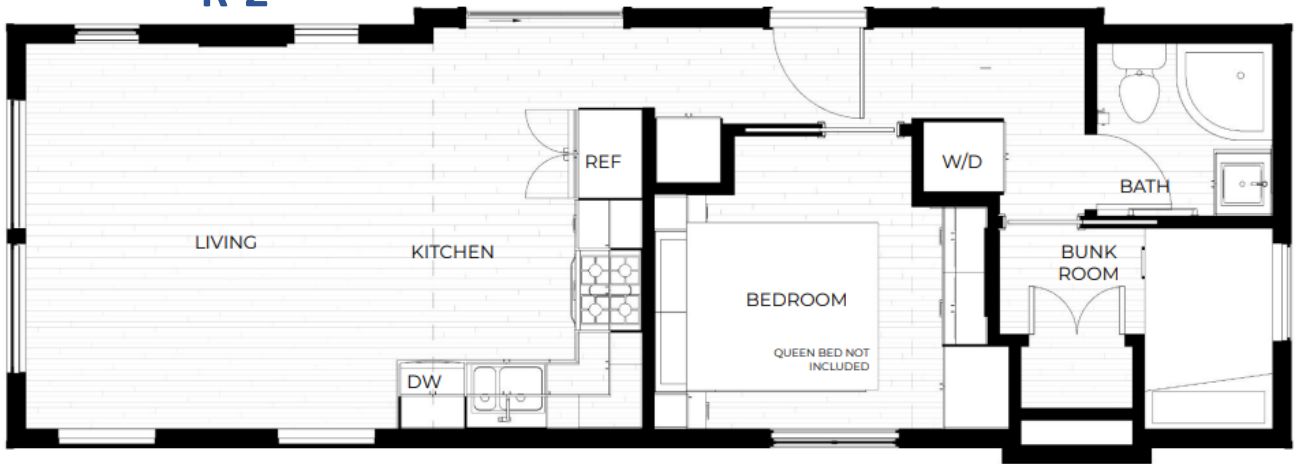
RADEC

R MODELS 13'.6" X 40'

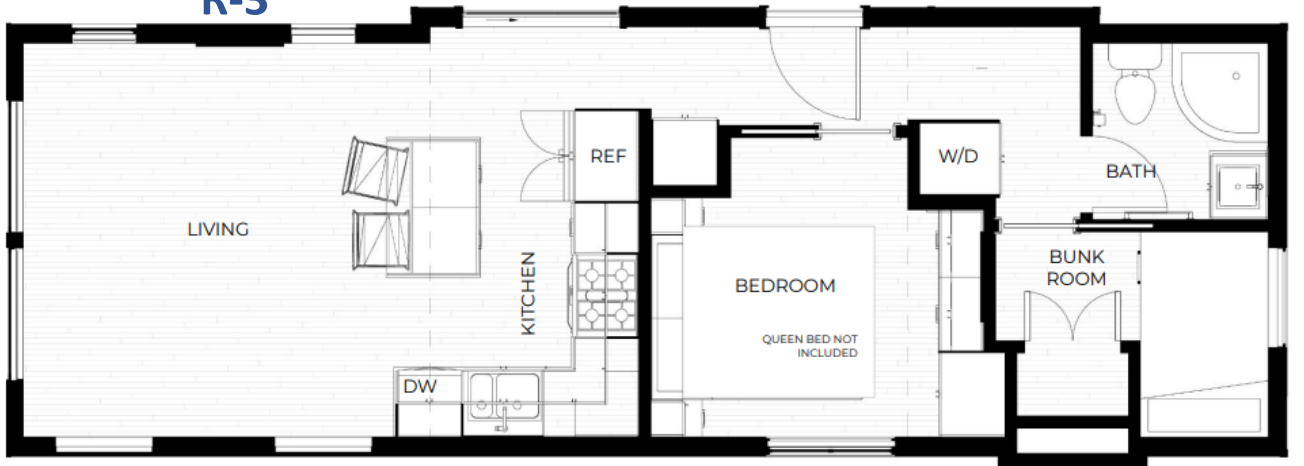
R-1



R-2



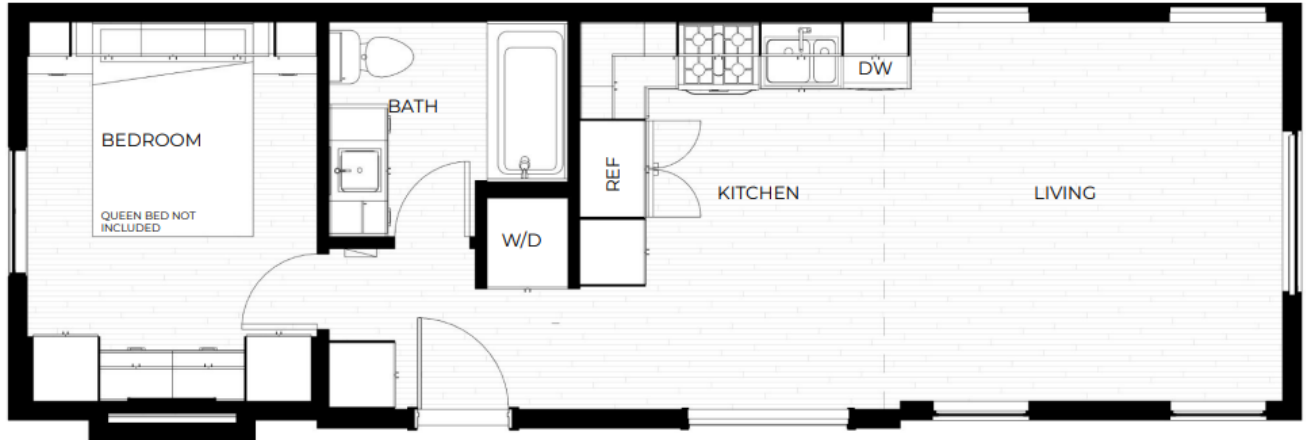
R-3



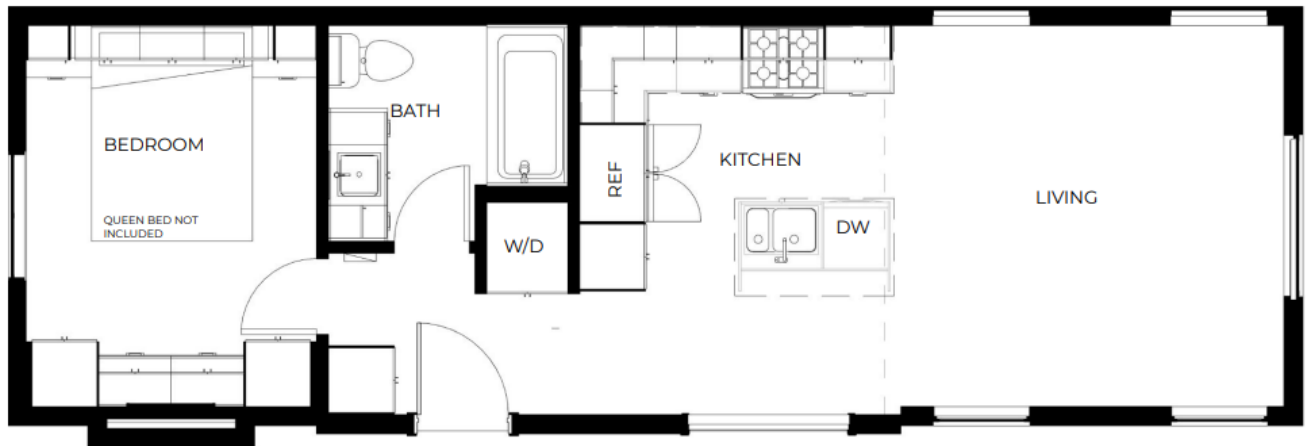


T MODELS 13' X 40'

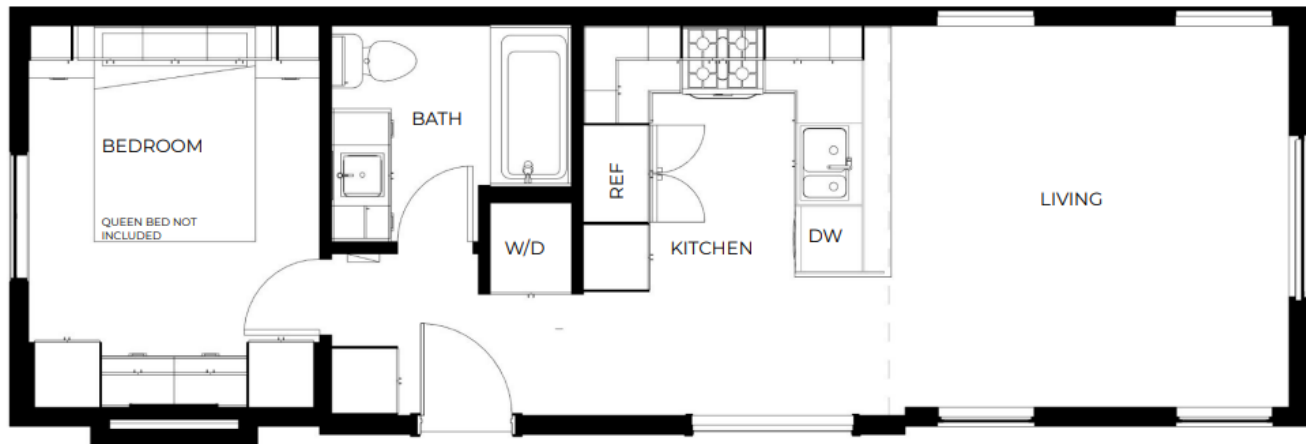
T-1



T-2



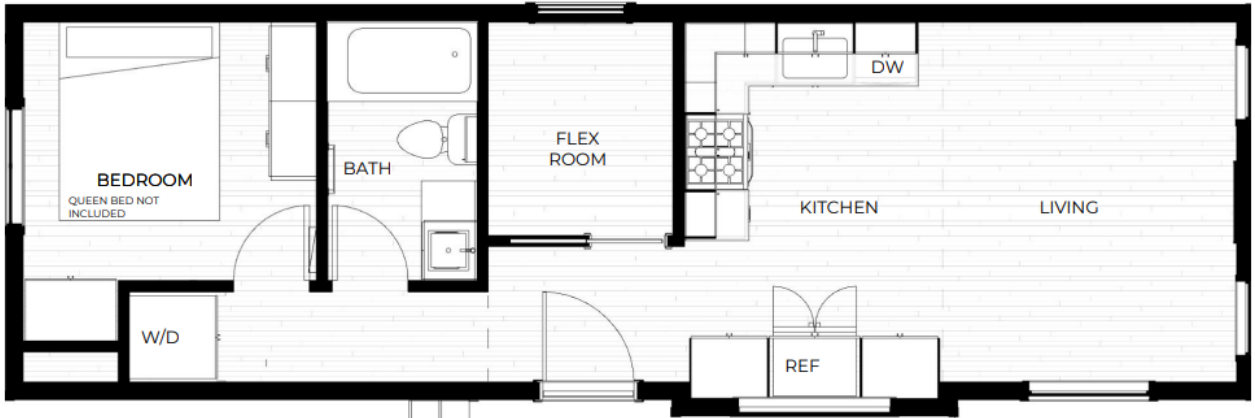
T-3



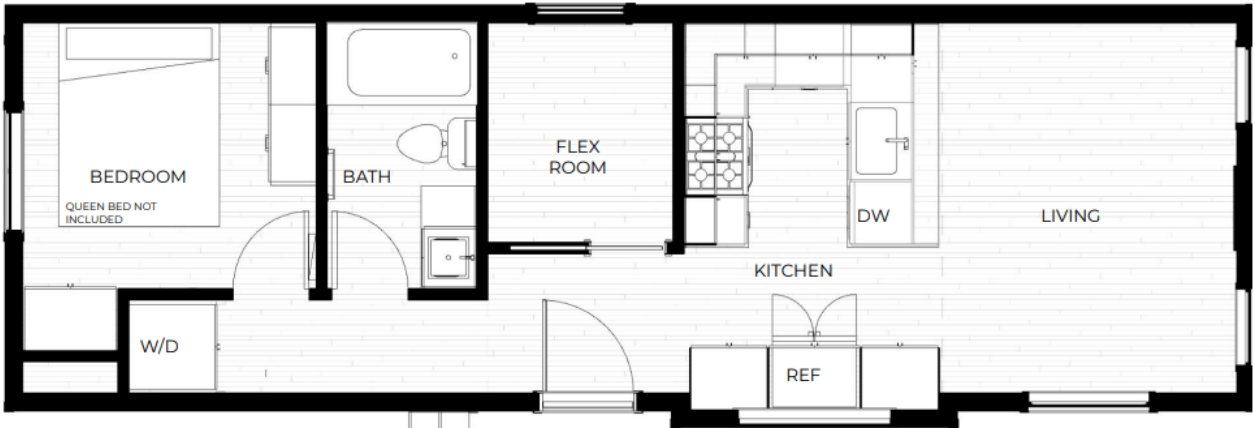


RADEC V MODELS 13'.6" X 41'

V-1



V-2



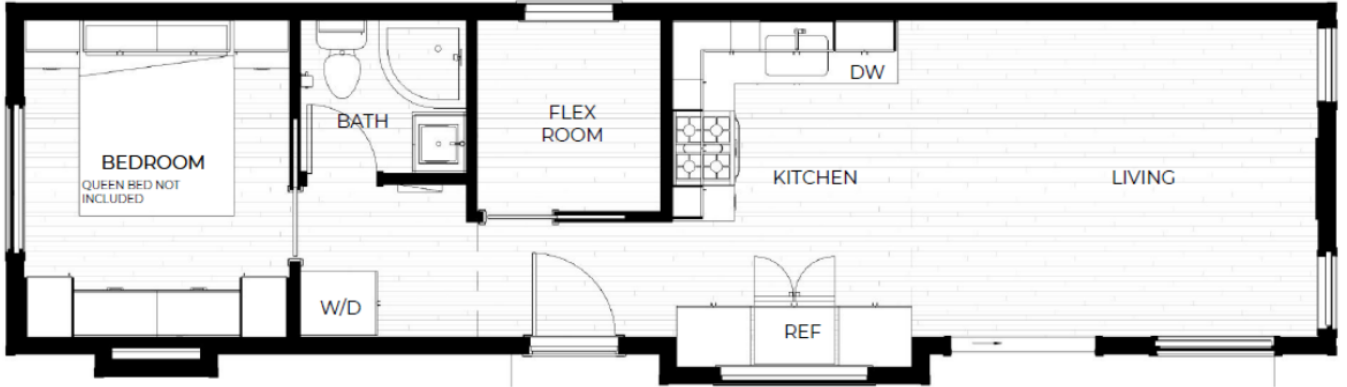
V-3





RADEC
X MODELS 11'9" X 45'

X-1



X-2



X-3





RADEC

Y MODEL 12'.9" X 45'

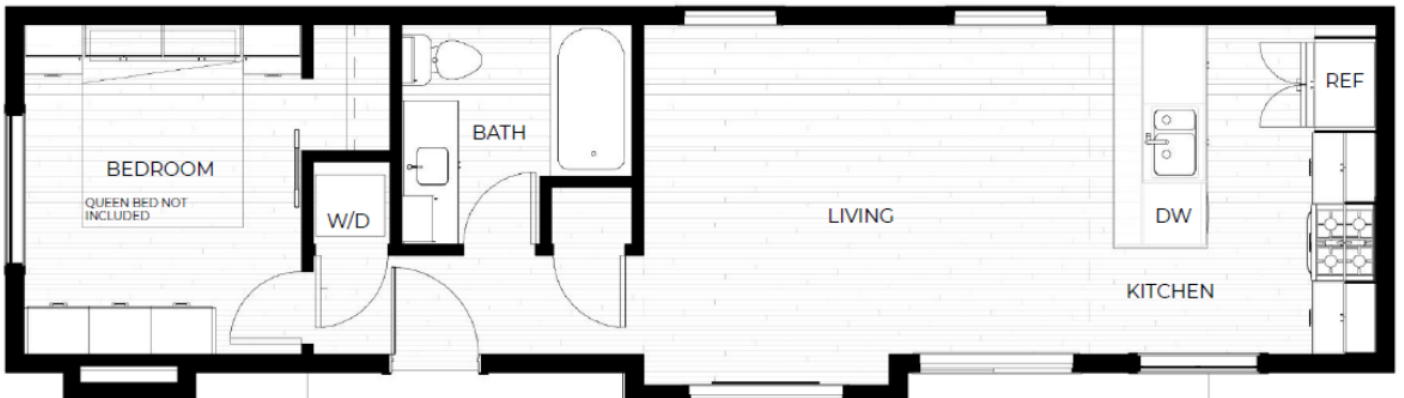
Y-1



Y-2



Y-3



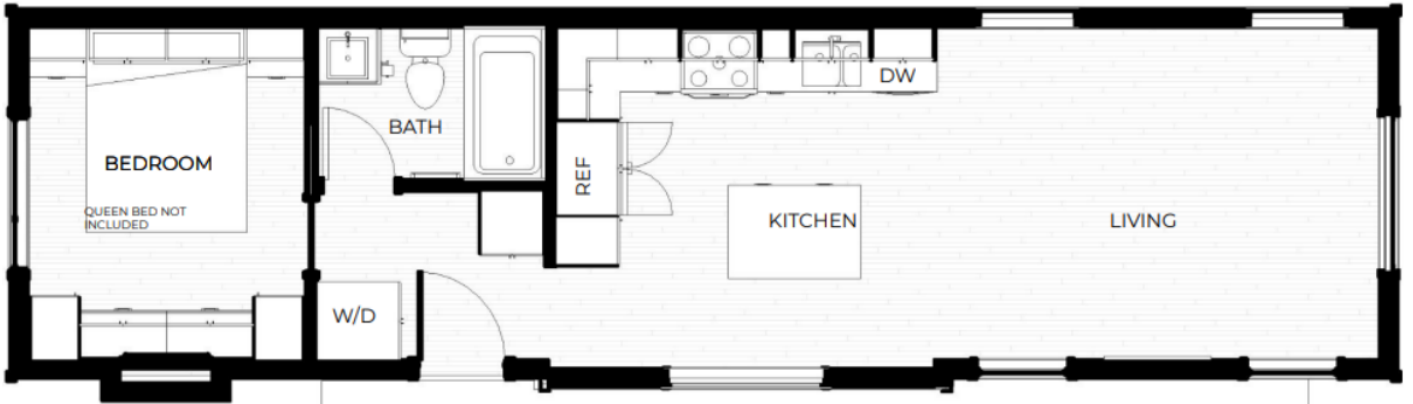


RADEC
Z MODELS 12' X 45'

Z-1



Z-2



Z-3

